



Built-in Manual Override Keyswitch

+ The optional Mechanical / Pneumatic Override Switch with Key is available for all sizes of MIU (MiniPurge Interface Unit) used with the Mini-X-Purge systems. The switch is very unique in the fact that it is "integral" to the MIU. This Manual Override Keyswitch along with a "Hot Work Permit" allows the end user to open the enclosure, maintain power on their protected enclosure while an adjustment can be made to the instrumentation that is normally being protected. The switch is factory installed by simply utilizing an existing conduit opening on the Explosion Proof box. The end user no longer has to install their own override device. Specify p/n AGM-GMOO-016 along with your choice of MIU when ordering. See Product Data Sheet MPIFU 10-05

Reasons to Buy Expo Products

- + Full line of X, Y, & Z Purge Units
- + 1/2 the size of other purge units
- + Direct mount units, no extra piping or labor
- + One model number includes the Relieve Valve(vent) as standard
- + Relieve Valve (vent) is small and patented and made of 316 stainless steel
- + Stock is kept at our Ohio facility
- + Same day shipment at no extra charge when ordered by 4:00PM

FM Certificate Up-Date

+ Chagrin Falls, Ohio - Expo Technologies, Inc., the Purge + Pressurizing Specialists is please to announce the range of MiniPurge Type X, Y, Z systems are now certified to the latest NFPA 496 – 2003 standard by FM. What does this mean to you? When Expo supplies an X or a Z* purge system it will be certified to the latest USA and ATEX standards. *When ATEX Zone 2, Cat 3 EEx nZ system is required please specify when ordering as an additional label is required. The FM / Expo certificate is available at www.expoworldwide.com

"The Purge + Pressurizing Specialists"

Expo Technologies, Inc

67 E. Washington Street, Chagrin Falls
Ohio 44022-0486, USA
T 888-NFPA-496 (Toll Free)
F 1 440 247 5409
E sales.na@expoworldwide.com

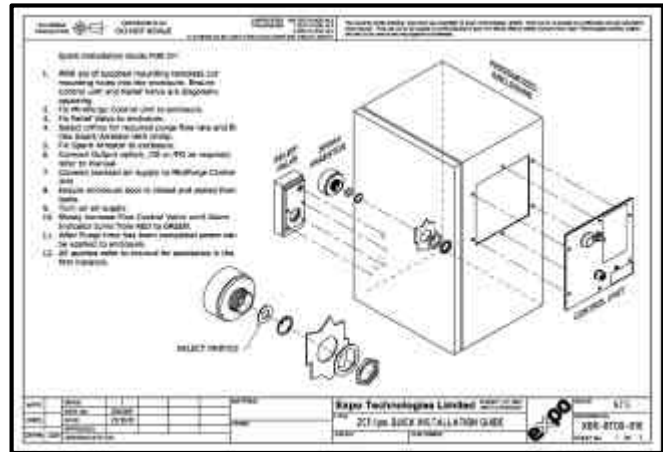


ATEX



Quick Installation Guide

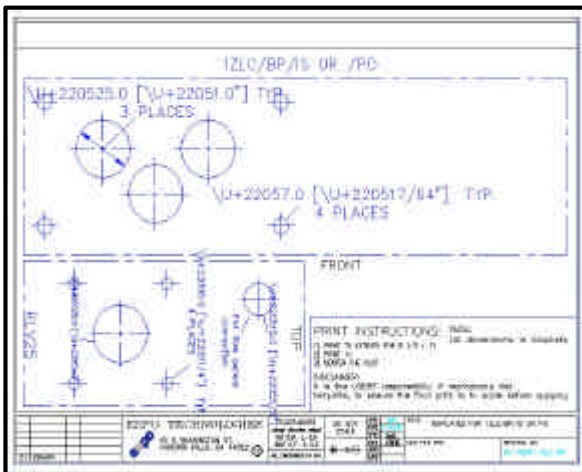
+ You have just received your first Expo MiniPurge system and you are in a hurry to install it on your purged enclosure, analyzer. You open the box, scratch your head, and say to yourself “Where do I begin?” Then you spot the ‘Quick Installation Guide’ and feel relieved. When you have finished, you say to yourself “That was easy!” You are not alone! More and more Expo users are feeling this way. “Time is Money” & the use of this simple guide has just saved both. Expo has been including the guide in every shipment of Mini-Z-Purge models since last April. Copies are available in PDF format. Ask for yours today!



Quick Installation Guide

Easy Installation Template

+ Here is another great addition to Expo manual documentation and shipments that is designed to save you “Time & Money”. Just like the Quick Installation Guides described above, the Templates will enable you to get your Expo system “up & running” in record time. Making your own physical measurements on the hardware can sometimes be time consuming. These measurements can also be lost or forgotten by the time you really need them. The templates virtually eliminate the guesswork and allow for a trouble-free installation. Copies are available in CAD format upon request.



Easy Installation Template

LC (Leakage Compensation) Hook-Up Kit

+ The Piping Hook-up Kit can be supplied for all LC (Leakage Compensation) MiniPurge systems, convenient piping kit between the Relief Valve & Control Unit (Flow Sensor). The purge flow rate is measured at the outlet (RLV). This ensures the purge flow passes through the enclosure, additional safety for the operator and plant. (5 ft length)
Part # RLVHOOKUPKIT



LC (Leakage Compensation) Hook-Up Kit

“The Purge + Pressurizing Specialists”

Expo Technologies, Inc

67 E. Washington Street, Chagrin Falls
Ohio 44022-0486, USA
T 888-NFPA-496 (Toll Free)
F 1 440 247 5409
E sales.na@expoworldwide.com



ATEX

